

26.04.23



Green Economic Transition Facility Business Breakfast Launch

www.getfmw.org

TABLE OF CONTENTS

1. Context

2. Green Economic Transition Facility (GETF)



Financing structure of the GETF



Technical assistance by the GETF



Project selection process of the GETF



Eligibility criteria for the GETF



Windows and challenges of the GETF



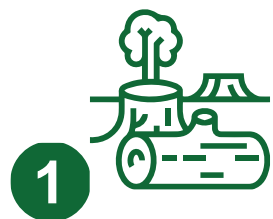
GETF Window 1 areas of focus

3. GETF Impacts

4. GETF Team

CONTEXT

Malawi faces numerous environmental challenges:



1 Deforestation

causing the loss
of 33,000 hectares
per year



2 Land degradation & soil erosion

reducing agricultural
productivity by 6%

Environmental destruction is costing Malawi the equivalent of 5.3% of GDP each year (UNEP)

CONTEXT (cont'd)

The driving force - **unsustainably harvested biomass** as a source of energy.

- 80.5% of Malawi's total energy consumption comes from biomass
- Only 11% of the country's total population has access to electricity

Malawi Charcoal Strategy - 97% of Malawian households rely on firewood or charcoal as their primary source of cooking and heating.

Malawi faces extreme energy poverty and is unlikely to meet the SDG 7: **“Ensure access to affordable, reliable, sustainable and modern energy for all”**

WHAT IS THE GREEN ECONOMIC TRANSITION FACILITY?

The **Green Economic Transition Facility** (GETF) is a matching grant fund that aims to catalyze green business investments through de-risking and accelerating the growth of green business solutions. It will –



1 Focus on sector transformation

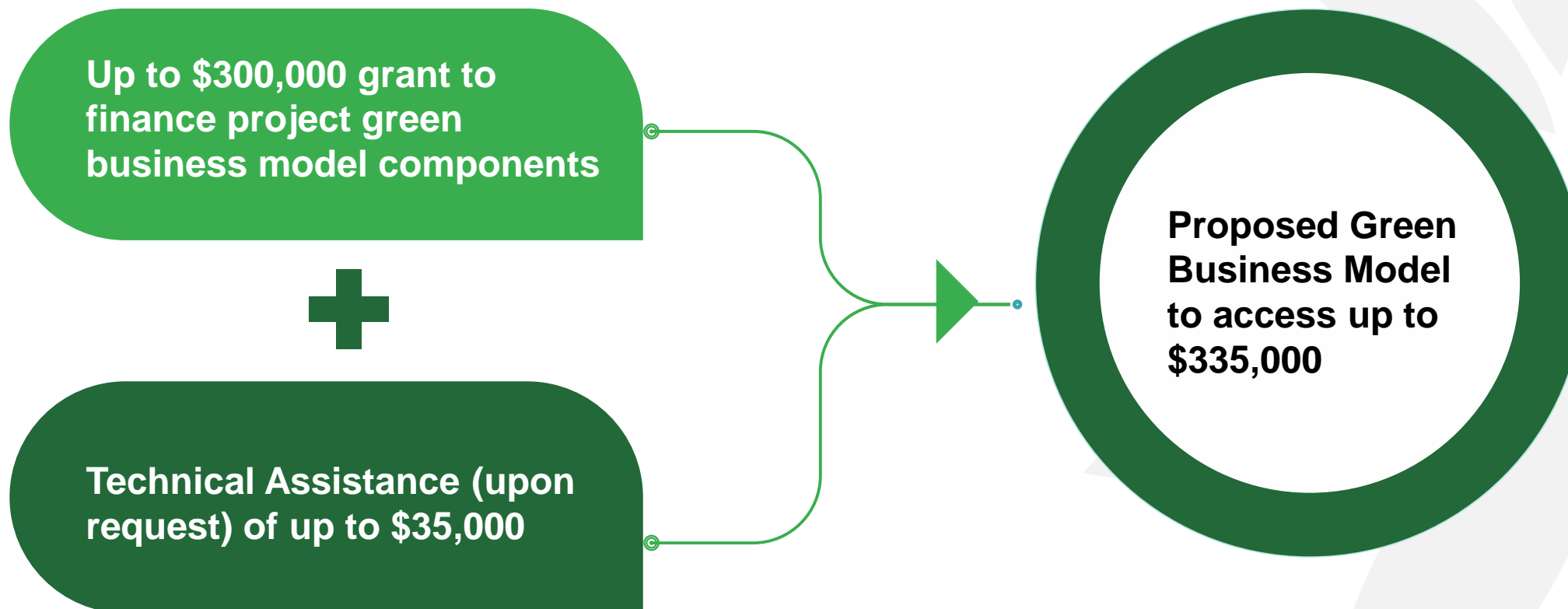


2 Align to private sector led green business commercial objectives



3 Generate and test sustainable green business solutions

FINANCING STRUCTURE OF THE GETF



TECHNICAL ASSISTANCE BY THE GETF



Business Management support



Business Development support



Support to scale product, technology, and innovation



Support to safe-guarding, standards and regulations



Market Research and Behavioural Change Marketing

PROJECT SELECTION PROCESS

1st Step

1

Expression of Interest

1st Round Opens on
26th April to Close on
19th May 2023

2nd Step

2

Submission of Project Full Proposal

1st Round Submission
of Proposals to close on
30th June 2023

3rd Step

3

Contract Negotiation

Contract Negotiation

ELIGIBILITY CRITERIA FOR THE GETF

Eligible applicants must -

- Be **registered** and **operating** in Malawi for **profit**
- Demonstrate the capacity to implement the project
- Request between USD 40,000 and USD 300,000
- Provide **matching funds** of at least **30% of the total cost** of the business idea and if **in-kind**, not more than **10%** of company contribution
- Demonstrate the ability to deliver **environmental** and **social benefits**
 - ❖ Provide information on how it might affect the environment and how to mitigate negative effects
 - ❖ Ensure a minimum of **30% inclusion of women** or **youth** in the project as producers, suppliers or users (whichever applicable)
- For more details, please go to the **GETF website**

WINDOWS & CHALLENGES OF THE GETF



GETF Windows

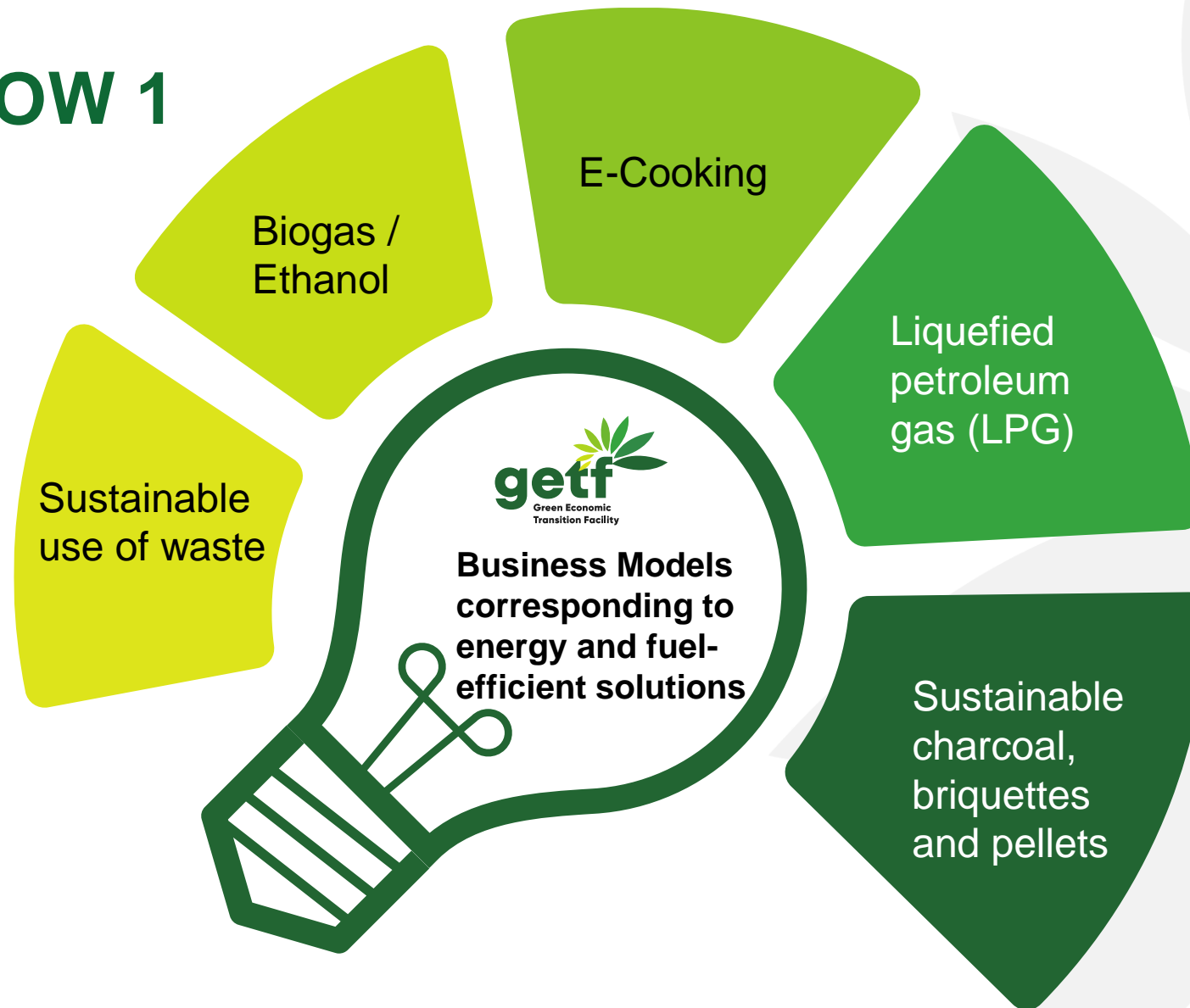
- **Window 1:** Accelerating Alternative Sources of Energy and Fuel-Efficient Solutions
- **Window 2:** Climate Change and Adaptation
- **Window 3:** Accelerating Green Business Solutions



GETF Challenges

- Device green business solutions and bring to market green products, services, and technologies that offer greater resource efficiency
- Embrace green and innovative distribution and logistics channels
- Adopt greener business operations and greener processing solutions
- Bring to scale existing business models proven to be viable but challenged by lack of funding

GETF WINDOW 1 AREAS OF FOCUS



IMPACT OF THE GETF

GETF is seeking to deliver the following Impacts

Social

Accessibility, Affordability and Acceptability'

Job Creation

Increase in Income for the poor

Environmental

Reduction in Waste and CO2 emissions

GETF TEAM COMPOSITION



Tambulani Nduwa Chunga
Project Manager



Daniel Walusako Ghambi
Business Accelerator Officer



Admore Chiumia
Business Accelerator Officer

GETF TEAM COMPOSITION



Francis Saka
Business Accelerator Officer



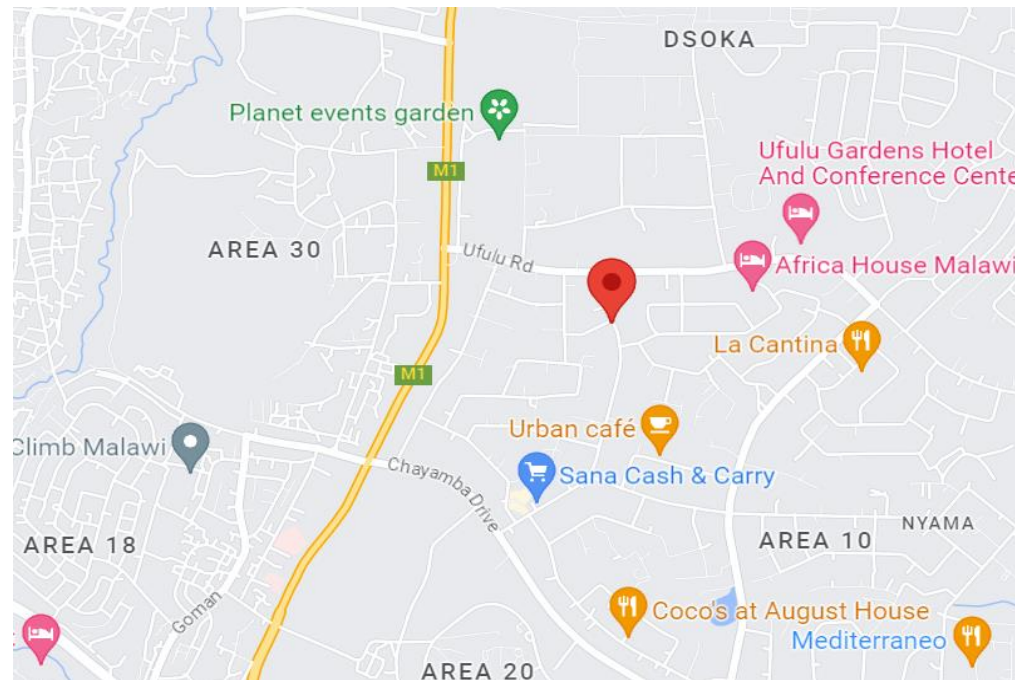
Assa Mulagha Maganga
Monitoring and Evaluation Officer



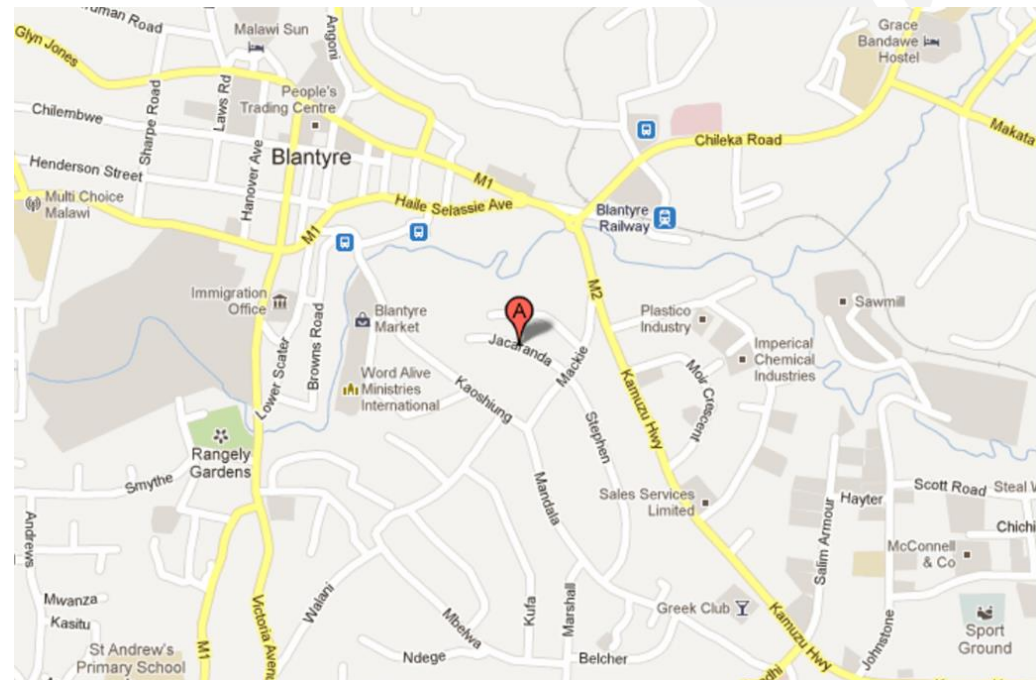
Wisdom Nelson Chimgwede
Communication Officer

GETF COUNTRY OFFICES

Lilongwe – 50 Mphonongo, Lilongwe



Blantyre – 11 Jacaranda Avenue, Mandala



26.04.23

Q & A

www.getfmw.org